



Reserve H2o Rinse Kit

Tools needed for installation of Rinse Kit:

Flathead screwdriver
Adjustable wrench
Drill
Scratch awl
Ruler

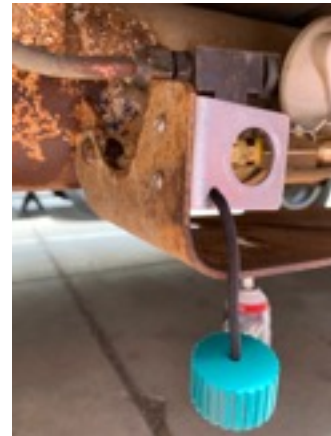
Phillips head screwdriver
Teflon tape (included)
11/32", 3/8", 1/8"
#30 or 29/64" drill bits

Steps:

1. Begin reserve water tank installation by attaching the male quick connect mount to the propane skid plate.



2. Remove copper reducer and male quick connect and attach bracket to skid plate.



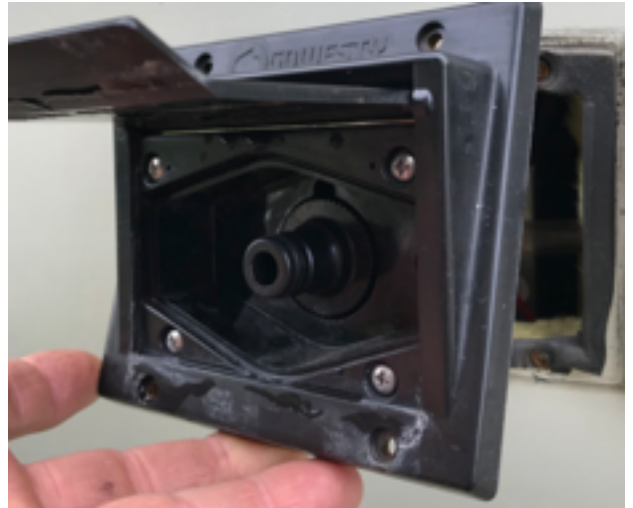
3. Add teflon tape to the 1/2 mpt 90 deg to 3/8 barb fitting and tighten with wrenches until secure.



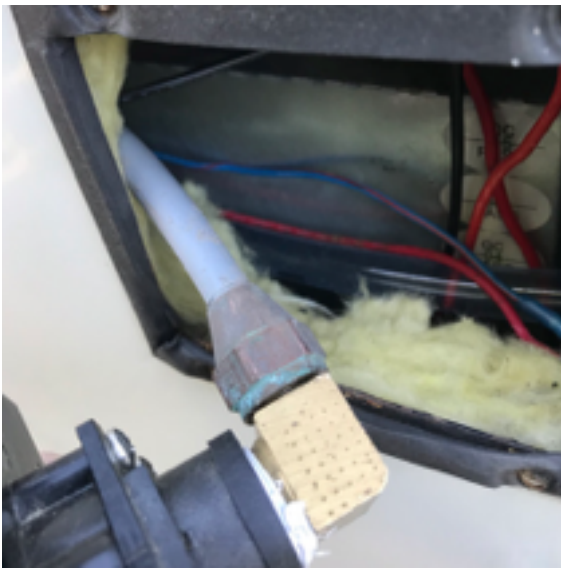
4. Remove 4 outer screws from GoWesty City Water box



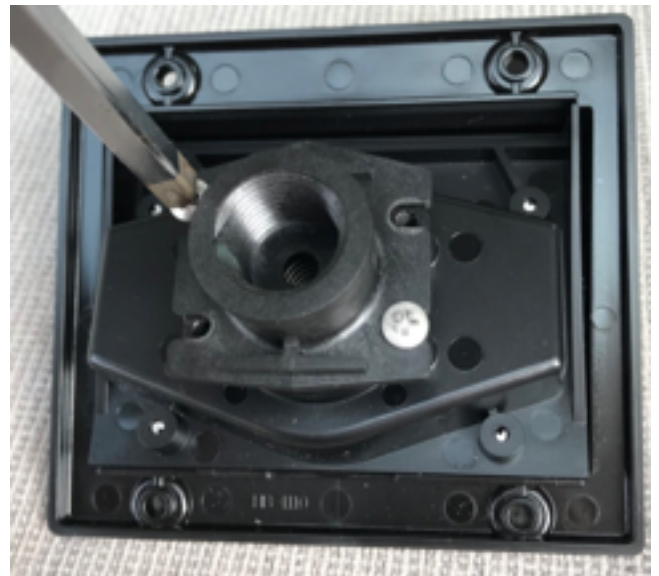
5. Remove Box from Van



6. Disconnect old water line.



7. Turn box around remove 4 screws from the rear



8. Unscrew the plastic quick release



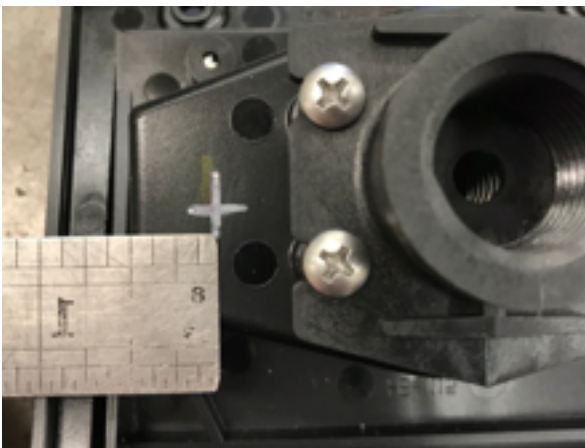
8. Remove rubber ball and spring.



9. Screw back together making hand tight and make sure there rubber washer is used



10. Measure 1/2 inch from edge of plastic



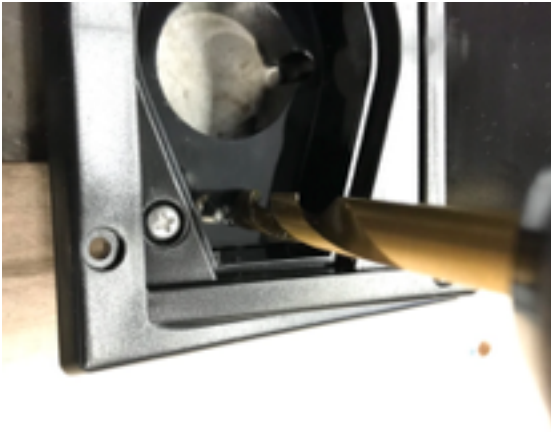
11. Measure and mark the center.



12. Center punch with a scratch awl and drill a 1/8 inch pilot hole. Drill slowly with little



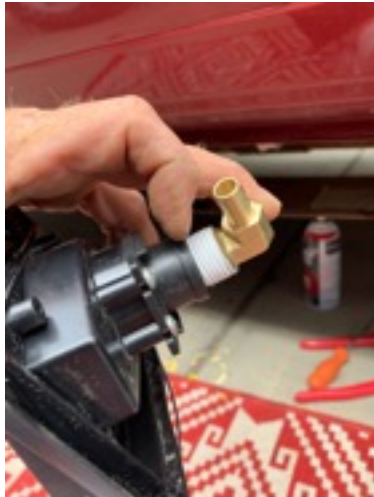
13. Drill a 3/8 inch hole from the top into a piece of wood on the opposite side. Drill slowly.



14. Unscrew rubber cap from button and push through the hole in the city water box. Screw rubber cap back on from the front side of the box.



15. Wrap brass 90 deg. fitting with teflon tape and screw into back of gowesty box. Be careful not to cross thread into the plastic box



16. Attach hose and hose clamp



17. Go to the inside of the van and disconnect the city water line from the faucet under the sink.. If you will be using the stock faucet you will have to cap the city water connection on the faucet. If you have already installed a shurflo faucet with the 3 way city water diverter, then disconnect it completely and connect the sink hose from the 3 way valve to the faucet

(Remove the 3 way diverter if installed)



18. Run the hose with wires and push button switch through from under sink cabinet to outside city water box hole.



19. Connect this hose to the pump inside the van under the sink



20. Attach pump ground to pillar with the cabinet screw and connect hot power wire to either the yellow hot faucet wire or another hot source.

21. I like to mount the pump above the sink cabinet shelf as close to the back so that the hose doesn't kink. The pump can be mounted just about anywhere under the sink cabinet. Here are a few examples

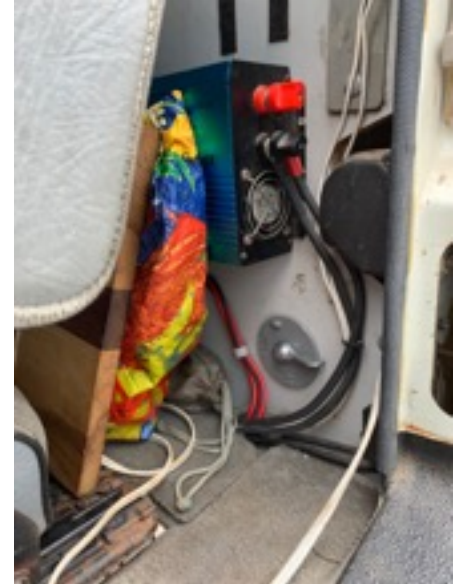


22. Line up the 3 way valve and cover plate and drill hole for the shaft of the 3 way valve.

23. Here are some rough measurements for the 3 way valve shaft hole. This location may vary according to personal preference and setup



24. Here are also some examples of locations for 3 way valve and cover plate



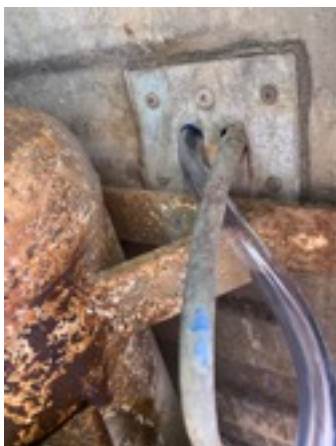
25. Install cover plate.



26. Attach lever and screw



27. Either use existing hole from old propane line or drill a new hole for the exterior reserve hose. Connect hose to outside port.



28. Hose will connect here. Hose lengths may be cut to fit according to individual installations.



29. The next hose to pull through is the new interior tank hose to 3 way line. The easiest way to run this hose is to remove the exterior fill box and feed the new line from the water tank to the exterior fill box and then through to the hole under the sink. You may need someone outside the van to help feed the hose through. You can also feed a wire through and attach the hose and pull it through.



30. Drill a #30, 29/64" (.4531) or 11.5094 mm hole into the top of the water tank. Drill slowly and thread in new 90 degree plastic 3/8" to 3/8" threaded fitting into top of water tank. Make sure to drill the hole at least 2" from existing stock fitting to allow for screwing the new fitting into the water tank.



31. Insert tank water line with filter into bottom of new fitting. you may have to unbend plastic hose to be a bit more straight. Hose should curve into the bottom corner of tank.



32. Connect new water line to the new water tank connector.



33. Now turn the 3-way valve to IN.



34. It's time to fill your water tank and test the system. We previously tested all of the lines and connections that you just installed, but you need to check the entire system for leaks after installation. Plug your quick-release power wash line with the spray nozzle into the GoWesty box. Push the Rinse switch on and hold the spray nozzle open until water comes out. Once water comes out of the spray nozzle, you can release the spray trigger and the system will be pressurized. Check for any leaks from the back of the box and inside the sink cabinet. Once you have thoroughly checked the system, turn it off and bleed out the outside rinse line by opening the spray valve after turning it off. Now grab a water container and drop the provided hose with filter and stainless steel nut into the container filled with water. connect the other end to the quick connect water fitting that you installed onto the skid plate of the propane tank.

ATTENTION: The pump will automatically turn off once a certain pressure is reached in the system. You will hear the pump turn on and off as you use the outside rinse. Once you are finished, turn the pump off and bleed out the line by opening the spray nozzle. You can then disconnect the quick-release line from the GoWesty box. **DO NOT** leave the switch on and the system pressurized unless you're using the system.

When using the Rinse Shower Kit with the Westy Hot Shower system, you can shut the flow of water off with the shower wand to help conserve water and to turn the system on and off. Make sure to turn off the Rinse Shower Kit switch when finished.

35. Screw the GoWesty box back into the side of the van

